

TEAM MEMBER QUALIFICATIONS



KEY TEAM

TRAVIS PYLE, PE | Project Manager



- Senior Project Manager with over 24 years of engineering consulting experience managing MSW and NMSW landfills, transfer stations, and other solid waste management projects
- Licensed professional engineer in Idaho, Montana, and Washington
- Solid waste specialist with experience in all facets of solid waste consulting, including siting, planning, design, and construction administration services
- Familiar with the LSI Moscow Solid Waste Processing Facility, based on previous work experience at the site for master planning and transfer building improvement assessments

Key Projects

- *Carothers Road Solid Waste Facility, Cell 4 Engineering Services, Whitman County (Pullman), WA* – Project Manager for developing a comprehensive fill plan and closure / post-closure plan for Cell 4, which is a limited-purpose landfill accepting non-MSW materials.
- *LSI Moscow Solid Waste Processing Facility, Master Planning, Moscow, ID* – Project Manager for developing a comprehensive master development plan for the Moscow facility, including expansion of the composting operations and adjoining NMSW landfill, entrance facilities, waste transfer building, and recycling and storage facilities.
- *Kootenai County Fighting Creek Landfill, Coeur d'Alene, ID* – Project Manager for various projects at the facility over the last 20 years before joining Great West Engineering and in the last 7 years with Great West Engineering. Project work has included fill planning, cell expansion design, master planning, and closure/post-closure planning services.

STEPHANIE BECKERT, PE | Project Engineer



- Senior Project Manager with over 18 years of engineering consulting experience managing MSW and NMSW landfills, transfer stations, and other solid waste management projects
- Licensed professional engineer in Idaho and Montana
- Experienced in all areas of solid waste consulting, including siting, planning, design, and construction administration services
- Assisted over a dozen facilities with closure plans and closure projects

Key Projects

- *Bonneville County Hatch Pit, Bonneville County, ID* – Project Manager for closure verification of portions of the closed hatch pit (old MSW landfill and current C&D landfill).
- *Butte County, ID* – Project Engineer for developing a closure plan and designing closure of portions of the landfill that have reached final elevations.
- *Gallatin County, MT* – Project Manager for developing closure post closure care plans and two landfill closure plans.

MICHELLE LANGDON, PE | Project Engineer



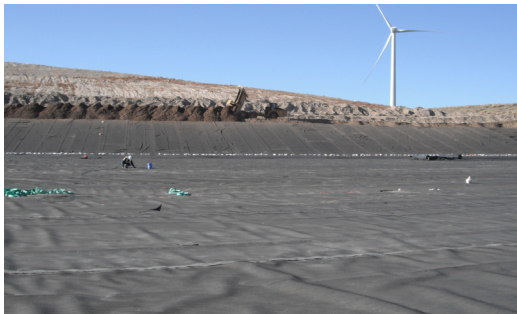
- Senior Project Manager with over 19 years of experience specializing in landfill and transfer station design and operations.
- Certified Instructor for Manager of Landfill Operations (MOLO) Course
- Licensed professional engineer in Alaska and Oregon
- Wide range of experience in solid waste engineering including fill planning, closure design, new facility design and rehab, master planning and facility operations

Key Projects

- *Carothers Road Solid Waste Facility, Cell 4 Engineering Services, Whitman County (Pullman), WA* – Project Engineer for developing a comprehensive fill plan and closure / post-closure plan for Cell 4, which is a limited-purpose landfill accepting non-MSW materials.
- *LSI Moscow Solid Waste Processing Facility, Master Planning, Moscow, ID* – Project Engineer for developing a comprehensive master development plan for the Moscow facility, including expansion of the composting operations and adjoining NMSW landfill, entrance facilities, waste transfer building, and recycling and storage facilities.
- *Confidential Client, Juneau, AK* – Project Manager and lead engineer for developing a master plan, fill plan and detailed design for an MSW fill area over and around an existing NMSW landfill area.

Bonneville County, Idaho

PETERSON HILL AND HATCH PIT



▲ Phase 3 Cell Construction

- ✓ On-call engineer for over 30 years
- ✓ Capital Improvement projects
- ✓ Continuous operational assistance
- ✓ Closure Post Closure Planning

Contact: Blair Hillam • Solid Waste Manager • (208) 604-2046

Project Highlights

- Bidding assistance
- Conceptual design
- Construction management
- Data/environmental collection
- Design
- Field inspections & Groundwater study
- Preliminary engineering report
- Permitting, Planning & Survey
- Alternative liner system
- Capacity and performance analysis
- Tier 2 sampling
- Title V air permit reporting
- Gas collection & control system design

Whitman County, Washington

CAROTHERS ROAD SOLID WASTE FACILITY – CELL 4



▲ Cell 4 Limited Purpose Landfill

- ✓ Closure Planning
- ✓ Fill Planning
- ✓ Post-Closure Planning & Financial Assurance

Contact: Mark Storey, PE • Public Works Director • (509) 397-5204

Project Highlights

- Airspace and Capacity Analysis
- Fill Staging Plan
- Closure Planning
- Cover systems design and stormwater controls
- Post-Closure Planning
- Financial Analysis and Assurance

Butte County, Idaho

CARCO SANITARY LANDFILL – CELL 1



▲ Cell 1 Landfill Closure

- ✓ Alternative Final Cover Modeling & Design
- ✓ Post-Closure Planning

Contact: Brain Harrell • County Commissioner • (208) 527-3021

Project Highlights

- Field Investigations
- Funding Source Assistance
- Alternative Closure Design
- Cover Material Sourcing
- Construction Inspection
- Post-Closure Planning
- Master Planning

Lemhi County, Idaho

LEMHI COUNTY LANDFILL



▲ Completed Cell Looking North

- ✓ Closure/
Post-Closure
Planning
- ✓ Landfill
Expansion
Design

Project Highlights

- Closure/Post-Closure Plan
- Updated Cut and Fill Plan
- Operations and Maintenance Manual
- 2.5 Acre Landfill Expansion

Contact: Scott Duncan • Solid Waste Manager • (208) 756-6441

Latah Sanitation, Inc. (LSI), Moscow, Idaho

MOSCOW WASTE PROCESSING FACILITY MASTER PLANNING



▲ LSI Tier II NMSW Landfill

- ✓ Familiarity
of the Site
- ✓ Site Master
Planning

Project Highlights

- Solid Waste Facility Master Planning
- Site understanding and familiarity with the LSI solid waste facility
- Capacity and site improvements for managing waste in the future
- Integration of Tier II landfill into the master plan

Contact: Brandon Johnson • CEO • (208) 691-9850



Nothing but Exemplary

Travis' performance on all aspects of our projects has been nothing but exemplary. Having spent 18 years in the consulting business myself, I understand what it takes to meet the clients professional and technical expectations, both of which Travis excels at.

MARK STOREY, PE, DIRECTOR/COUNTY ENGINEER

Whitman County

